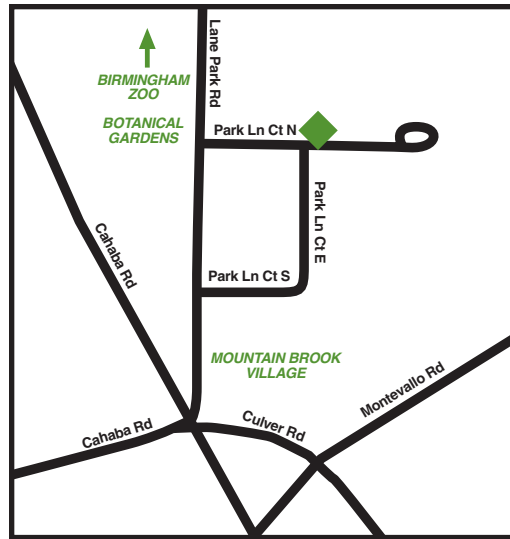


Amenities...

- ◆ Self-Cleaning Gas Stove
- ◆ Frost-Free Refrigerator
- ◆ Dishwasher
- ◆ Laundry Room
 - Open 24 Hours Per Day*
 - Attendant On Duty*
 - 8:00 To 4:00 Mon-Fri*
 - Pick-Up & Delivery*
 - (small charge)*
- ◆ Maintenance, Laundry and Office Staff on duty Monday-Friday
- ◆ Balcony/Patio
- ◆ Blinds
- ◆ Cable TV Available
- ◆ Central A/C
- ◆ Located in Mountain Brook Village - Convenient to English Village and Crestline Village, Restaurants, Shopping, Music, Galleries, Zoo, Gardens, and more



PARK◆LANE
a p a r t m e n t ◆ h o m e s

2525 Park Lane Court North
Mountain Brook, Alabama 35223
P 205.870.4160 ◆ F 205.879.2418

The Location
You Need...
The Lifestyle
You Deserve!

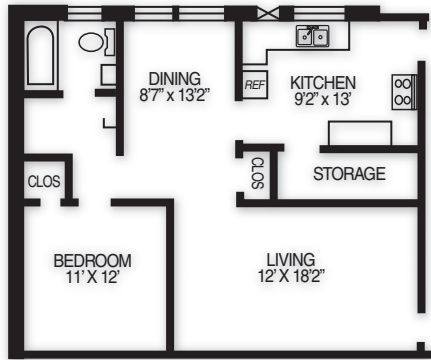


PARK◆LANE
a p a r t m e n t ◆ h o m e s

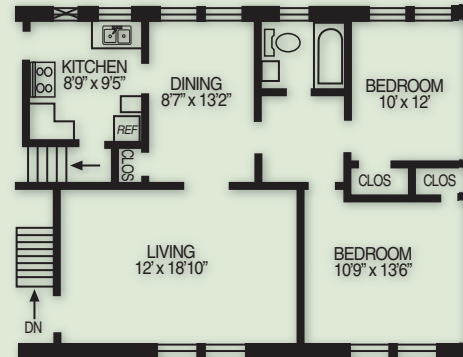
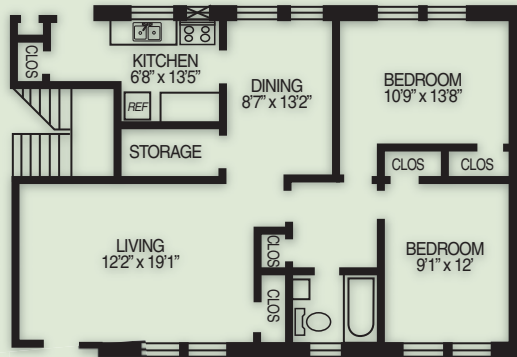




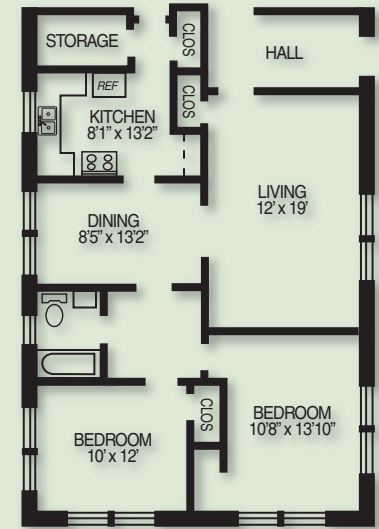
Charming historic apartment community located in one of Alabama's best neighborhoods. Walk to shopping in the Village or stroll through the Botanical Gardens or Birmingham Zoo just steps away. Spacious grounds create a park-like setting.



One Bedroom, One Bath
950 Square Feet



Two Bedroom, One Bath Floor Plans
1050 Square Feet



Text
"PARK"
to 62447

